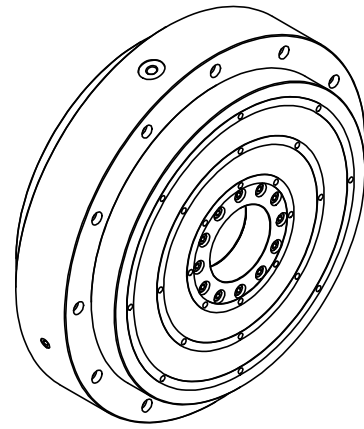


4

3

2

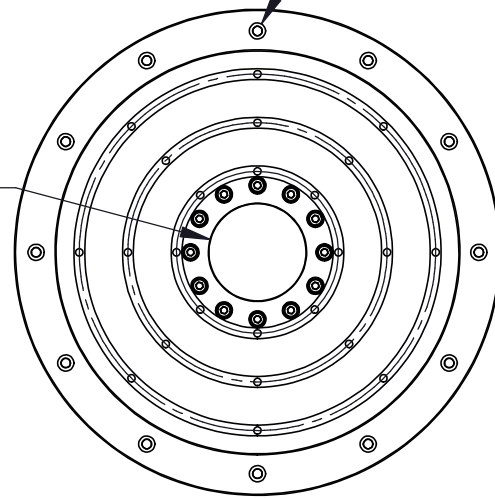
1



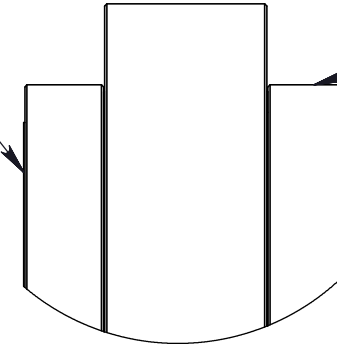
12X ϕ .344 [8.8] THRU ALL
 \square ϕ .591 [15.0] ∇ .31 [8.0]
 EQ. SP.

G1/4
 AIR PRESSURE
 SUPPLY PORT

ϕ 3.543
 [90]

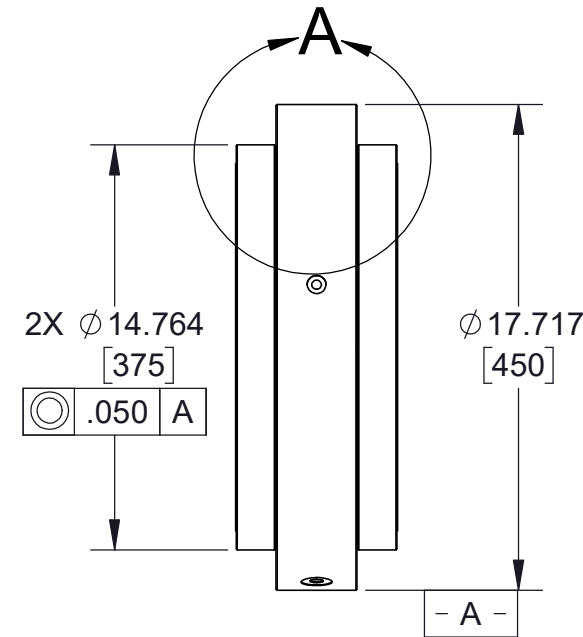


∇ .001 [.025]
 WHEN SPINDLE IS
 ROTATING SUPPLIED
 WITH 60PSI[4.1 BAR]
 SUPPLY PRESSURE
 (MOUNTING SURFACE)
 (BOTH SIDES)



DETAIL A
 SCALE 2 : 7

∇ .001 [.025]
 WHEN SPINDLE IS
 ROTATING SUPPLIED
 WITH 60PSI[4.1 BAR]
 SUPPLY PRESSURE
 (MOUNTING SURFACE)
 (BOTH SIDES)



ϕ 16.142 [410] B.C.
 ϕ 12.992 [330] B.C.
 ϕ 9.449 [240] B.C.
 ϕ 5.906 [150] B.C.

24X ϕ .268 [6.8] ∇ .88 [22.3]
 M8X1.25 - 6H ∇ .63 [16.0]
 BOTH SIDES

∇ .0005 [.013] B

∇ .0005 [.013] B

∇ .0005 [.013]

∇ .0005 [.013]

5.906 [150]

2.953 [75]

G1/8 VENT PORT
 DO NOT OBSTRUCT

NOTES:

1. ALL DIMENSIONS ARE REFERENCE UNLESS OTHERWISE SPECIFIED.

PROPRIETARY ITEM:
 THIS DRAWING CONTAINS
 INFORMATION PROPRIETARY TO NEW
 WAY MACHINE COMPONENTS, INC. ANY
 REPRODUCTION, DISCLOSURE, OR USE
 OF THIS DRAWING OR THE
 INFORMATION CONTAINED HEREIN
 IS EXPRESSLY PROHIBITED EXCEPT AS
 NEW WAY MAY OTHERWISE AGREE TO
 IN WRITING. ALL RIGHTS RESERVED BY
 NEW WAY MACHINE COMPONENTS, INC.

TOLERANCES UNLESS
 OTHERWISE SPECIFIED
 ANGLES: \pm 1/2°
 DECIMALS: XX \pm .01
 XXX \pm .005
 FRACTIONS: \pm 1/64
 SURFACE ROUGHNESS:
 ∇ RMS MAX.
 BREAK ALL SHARP EDGES:
 .005-.020

TITLE: SS-375 SPINDLE		DRAWN: N.S.		DATE: 3/13/14		MATERIAL: N/A	
CHECKED:		DATE:		HEAT TREAT: N/A		DWG. TYPE	
SCALE: 1:7		SHT. 1 OF 1		FINISH: N/A		REV. B	
USED ON (NW #): N/A						DWG. # SS-375	

NEWWAY
 air bearings

4

3

2

1