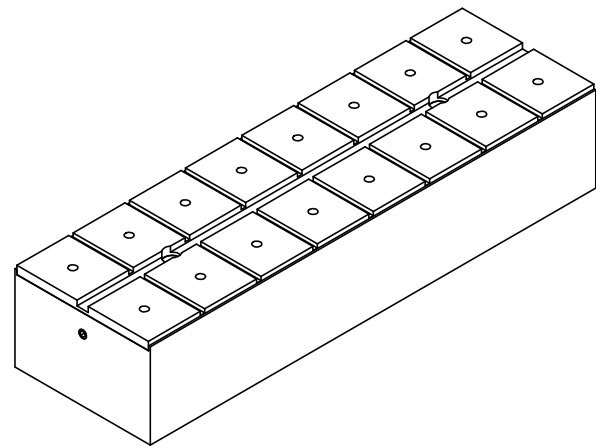


4

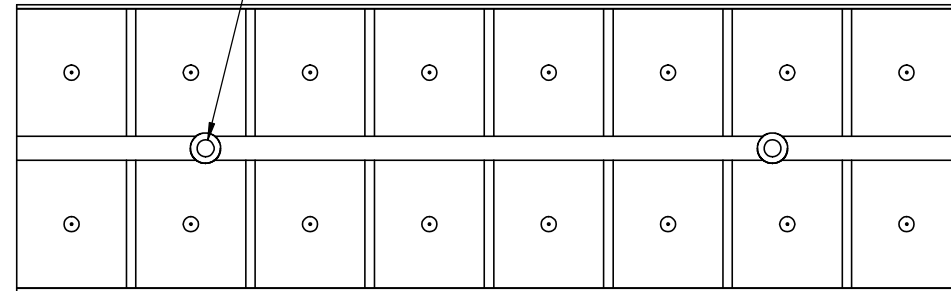
3

2

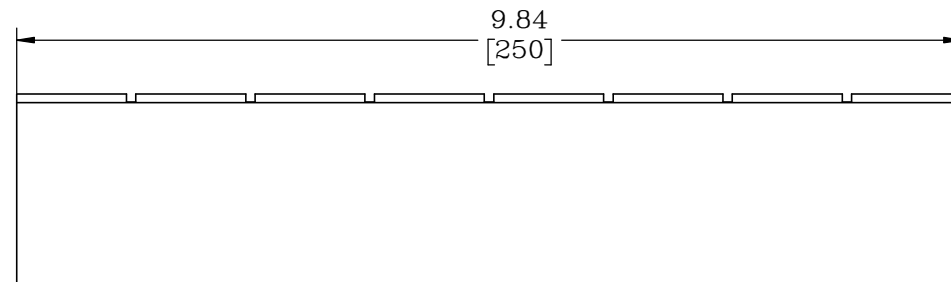
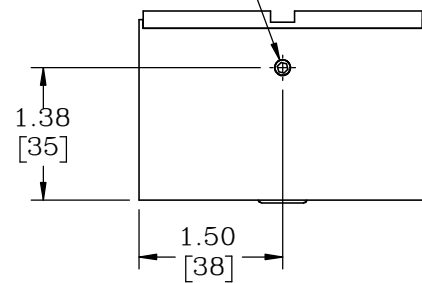
1



2X MOUNTING HOLES FOR M4 SHCS  
 SCREWS NOT SUPPLIED BY NEW WAY  
 $\phi .18 [4.5]$   
 $\sqsupset \phi .31 [8] \nabla .16 [4]$

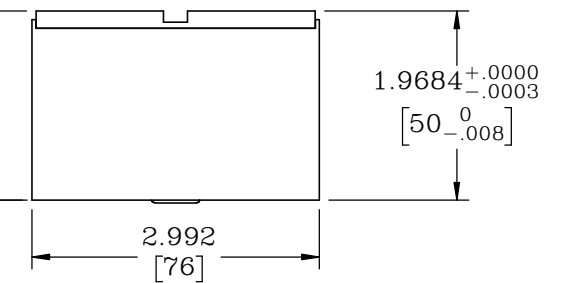


M5X0.8 TEST/GAUGE PRESSURE PORT  
 (PLUG SUPPLIED BY NEW WAY)

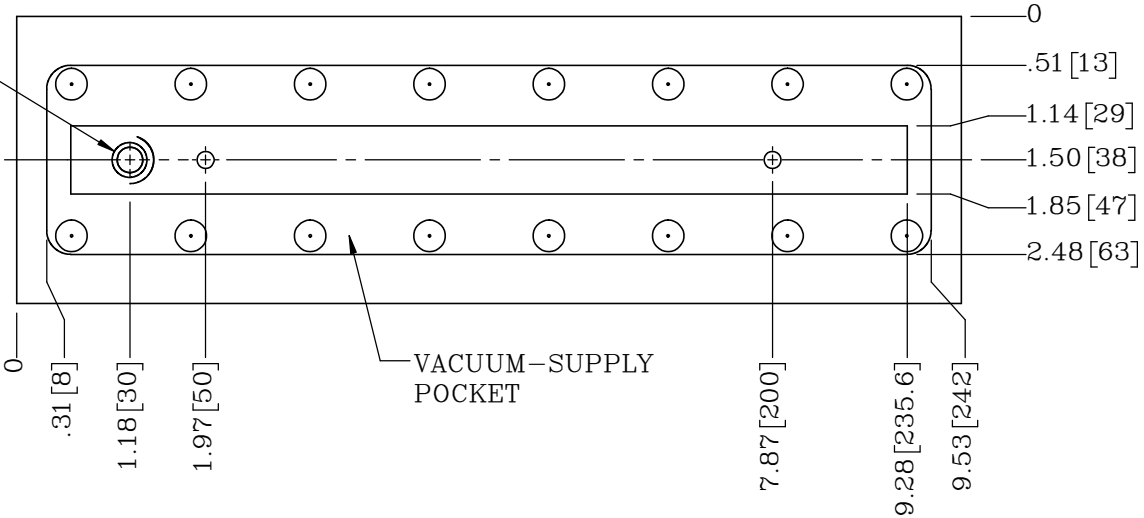


$\square .000080'' .002\text{mm}$   
 $\parallel .00016'' .004\text{mm} \text{ A}$

$\square .00016'' .004\text{mm} \text{ - A -}$



PRESSURE-SUPPLY PORT  
 W/ O-RING (SUPPLIED BY  
 NEW-WAY)



PROPRIETARY ITEM:  
 THIS DRAWING CONTAINS  
 INFORMATION PROPRIETARY TO NEW  
 WAY MACHINE COMPONENTS, INC. ANY  
 REPRODUCTION, DISCLOSURE, OR USE  
 OF THIS DRAWING OR THE  
 INFORMATION CONTAINED HEREIN  
 IS EXPRESSLY PROHIBITED EXCEPT AS  
 NEW WAY MAY OTHERWISE AGREE TO  
 IN WRITING. ALL RIGHTS RESERVED BY  
 NEW WAY MACHINE COMPONENTS, INC.

TOLERANCES UNLESS  
 OTHERWISE SPECIFIED  
 ANGLES:  $\pm 1/2^\circ$   
 DECIMALS: XX  $\pm .01$   
 XXX  $\pm .005$   
 FRACTIONS:  $\pm 1/64$   
 SURFACE ROUGHNESS:  
 $\sqrt{\text{RMS MAX}}$   
 BREAK ALL SHARP EDGES:  
 .005-.020

TITLE: FLAT PANEL VACUUM CHUCK, METRIC		MATERIAL: -	
DRAWN:	DATE: 2/18/19	HEAT TREAT:	
CHECKED:	DATE:	FINISH: BLUE ANODIZED HOUSING	
SCALE: 1:2	SHT. 1 OF 1	DWG. #	REV.
USED ON (NW #): -		S2225401	-

**NEWWAY**  
 air bearings

DWG. # S2225401

4

3

2

1